



**CISRS**  
CONSTRUCTION INDUSTRY  
SCAFFOLDERS RECORD SCHEME



**TRAINING PROSPECTUS**  
Version 1.3



# Contents

■ Introduction	4	■ PERI UP	22	Modules I - L	26
■ Overview	8	<i>CISRS PERI UP Scaffold Inspection</i>		■ I: Flexible Scaffold to Small Radius Circular Structure	
■ <b>Course Details</b>		■ Bespoke Training		■ J: Exhibition Scaffold used for Off-Site exhibition	
■ Scaffolding		PERI UP Flex Modules		■ K: Reinforcement Scaffold Application	
■ Scaffold Awareness Course	10	Modules A - D	24	■ L: Tower Platform Application	
■ COTS	12	■ A: Façade Scaffolding Application		Other modules	
<i>CISRS Operatives Training Scheme</i>		■ B: Pedestrian Access Solution using Standard Components		■ Manual Handling	28
■ SSPTS	14	■ C: Façade Scaffold with Loading Bay		■ Working at Height	29
<i>CISRS System Scaffold Product Training Scheme</i>		■ D: Flex Stair Tower 100 Application with 1m and 2m Flights		■ <b>PERI Services</b>	30
■ BASE	16	Modules E - H	25	■ <b>Contact Us</b>	32
<i>CISRS Basic Access System Erector</i>		■ E: 4.0m Bridge Span with Façade Scaffold			
■ Inspection		■ F: Radius Façade Scaffold Application			
■ BSI	20	■ G: Flex Staircase 75 Application			
<i>CISRS Basic Scaffold Inspection</i>		■ H: Shaft Staircase in Hanging Application			



# Introduction

PERI is a family-owned business that has become a global leader in the formwork and scaffolding industry, with over 70 subsidiaries worldwide.

Since being established in Germany in 1969, PERI has grown global revenues beyond €1.6bn per year whilst maintaining its family ethos.

Combining German manufacturing quality with excellent local customer service, PERI has helped to deliver some of the most high-profile construction projects across the world in a range of sectors such as skyscrapers, infrastructure projects and public buildings.

By utilising our skills and experience of the industry, we aim to provide high-quality individual and comprehensive levels of service to all of our customers.

Our training courses, support services and consultancy packages have been designed in accordance with all relevant [UK or European] safety standards and legislative requirements.





# I Introduction

PERI offers **CISRS-accredited scaffolding training**, bespoke scaffolding training according to the individual's needs, and training courses related to working at height.

Our training centre is located at our new Brentwood facility, but the wide of range of courses delivered by our scaffolding experts can be also be carried out at a location that is more convenient for you.

From entry-level to management, the courses we offer are designed to suit employees at any stage of their career, and depending on their level of experience.

All of the courses and qualifications on offer are listed inside this brochure.



**The Construction Industry Scaffolders Record Scheme (CISRS)** has been the industry recognised scaffold training scheme for over 40 years. It is the preferred scaffolding qualification of all the major organisations including CSCS, NASC, HSE Build UK, UNITE and the largest scaffold systems manufacturers.

## **Our Vision**

We strive to be the leading partner for all formwork and scaffolding applications – worldwide.

## **Our Mission**

We make construction more efficient, faster and safer. Providing the best service to our customers is what drives us every day.



# Overview

These two pages will provide you with a brief overview of each section, including contact details for enquiries regarding our bespoke courses.

## Scaffolder

The Construction Industry Scaffolders Record Scheme (**CISRS** is the recognised qualification for UK-based scaffolders).

We cover a wide range of CISRS-approved training courses and assessments, starting from entry-level (COTS).

Our courses cover everything you need to know about PERI UP scaffolding.

## Inspection

The CISRS Scaffolding Inspection Training Scheme (SITS is the nationally-recognised training qualification for scaffold inspectors).

Our CISRS Inspection training focuses on enhancing candidates' knowledge of scaffolding inspections. This is ideal for someone whose role involves carrying out regular inspections.

We also offer inspection training for our PERI UP system scaffolding. This is a CISRS-accredited system scaffold product inspection course.

# Overview

## Bespoke Training

### Why choose bespoke training?

We know that every business is different  
That is why we tailor our courses according  
to your organisation's approach, procedures  
and objectives.

As part of our bespoke training courses, we  
also adapt course content specifically around  
candidates' needs, level of experience and  
areas of development if required.

### How will courses be modified to suit individual needs?

If you would like to learn more about our  
bespoke training courses, contact us using the  
details below:

#### Email

[training.services@peri.ltd.uk](mailto:training.services@peri.ltd.uk)

#### Phone

01788 861600

## PERI Services

Our courses cover everything you need to know about PERI UP scaffolding. Turn to page 30 to learn more about our services.

# Course Details | Scaffolding

## Scaffold Awareness Course



### Course Duration

1 Day

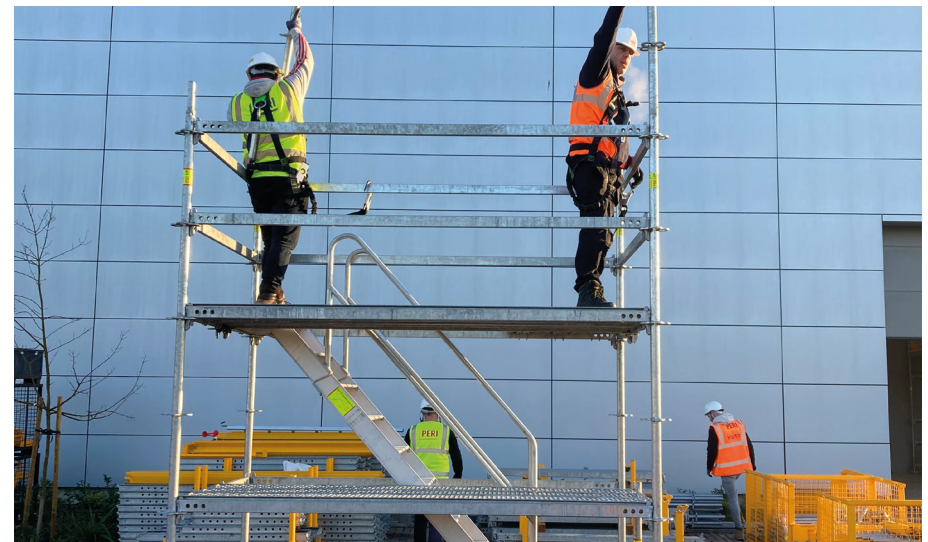
### Purpose of Course

This course is aimed at any personnel who manage, monitor, control and use access scaffolds for construction and maintenance. To provide information and raise awareness on the application and basic requirements of scaffolding performance standards and industry recognised good practice.

This is not a scaffold inspection course, those requiring this will be required to attend and successfully complete a CISRS Basic Scaffold Inspection course.

### Entry Requirements

- You must have a good understanding of spoken and written English. Please contact us if you have any concerns in this area.





# Course Details | Scaffolding

## Scaffold Awareness Course



### Course Content

- Overview of scaffolding
- Basic scaffolding terminology
- Legal responsibilities
- Industry Standards
- Working platforms
- Duties and loadings
- Foundations
- Ties & stability
- Access & egress
- Inspection & handover
- Designed scaffolding
- Protection of the public
- Training & competence
- Questions/test paper

# Course Details | Scaffolding

## CISRS Operatives Training Scheme (COTS)



### Course Duration

1 Day

### Purpose of Course

This course is for people who are new to scaffolding. Existing CISRS Scaffolding Labourer (green) Card holders also need to take this course to renew their card every five years.

The course teaches the basics of the industry and how to work safely with scaffolding and access equipment. It includes a minimum of six hours' tuition, and practical exercises and exams.

### Entry Requirements

- Good understanding of spoken and written English. Please contact us if you have any concerns in this area.
- Delegates wishing to book one of these courses will be required to have a CITB HS&E Test (or accepted exemption) in place at the time of booking.

The CITB HS&E Test (or accepted exemption) needs to have been passed within the previous 23 months before the course start date.

# Course Details | Scaffolding

CISRS Operatives Training Scheme (COTS)



## Course Content

- General responsibilities
- Basic scaffolding terminology (*components and application*)
- Servicing of equipment (*tube, fittings, boards etc.*)
- Boards and stock (*quality control*)
- Health, welfare, hygiene and housekeeping
- Electrical safety
- Fire prevention and control
- Noise and vibration
- Working at height
- Accident prevention and reporting
- Slips, trips and falls
- Personal Protective Equipment (PPE)
- Transport safety on site
- Equipment and tools
- Manual handling (*including loading and unloading*)
- Lifting equipment using rope and wheel
- Questions/test paper



# Course Details | Scaffolding

## CISRS System Scaffold Product Training Scheme (SSPTS)



### Course Duration

2 Days

### Purpose of Course

This course is for holders of a CISRS Card (either a Scaffolder or Trainee Scaffolder) who have completed a Scaffolding Part 1 course.

It will give you the practical and theoretical knowledge to erect and dismantle chosen scaffold systems safely, according to current legislation and to the manufacturer's instructions.

### Entry Requirements

- A CISRS Card (either a Scaffolder or Trainee Scaffolder) and have complete a Scaffolding Part 1 course
- You will need to be able to climb up and down ladders safely.
- You must be capable of handling decks and steel scaffold tubes.
- You must have a good understanding of spoken and written English. Please contact us if you have any concerns in this area.
- Delegates wishing to book one of these courses will be required to have a CITB HS&E Test (or accepted exemption) in place at the time of booking.
- The CITB HS&E Test (or accepted exemption) needs to have been passed within the previous 23 months before the course start date.

# Course Details | Scaffolding

## CISRS System Scaffold Product Training Scheme (SSPTS)



### Course Content

- Basic product information and manufacturer's instructions
- Legal overview (*health and safety*)
- British and European standards
- Overview of product accreditation and testing schemes
- Guidance and industry standards
- Component range
- Basic system(s) of work
- Bracing requirements
- Ties, stability and tie patterns
- Loading and duties
- Access towers
- Independent tied scaffolds including returns and hop-ups
- Birdcage access scaffold
- Loading towers
- Methods of access and egress including stairways

# Course Details | Scaffolding

## CISRS Basic Access System Erector (BASE)



### Course Duration

5 Days

### Purpose of Course

This 5-day course is for non-scaffolders, who erect, alter and dismantle basic system scaffold structures within restricted environments.

You will learn on PERI UP Flex system scaffold erected to a maximum height of 6 m.

On successful completion of the course, we will apply on your behalf for the CISRS Basic Access System Erector (BASE) Card.

### Entry Requirements

- Good understanding of spoken and written English. Please contact us if you have any concerns in this area.
- Delegates wishing to book one of these courses will be required to have a CITB HS&E Test (or accepted exemption) in place at the time of booking.
- The CITB HS&E Test (or accepted exemption) needs to have been passed within the previous 23 months before the course start date.

# Course Details | Scaffolding

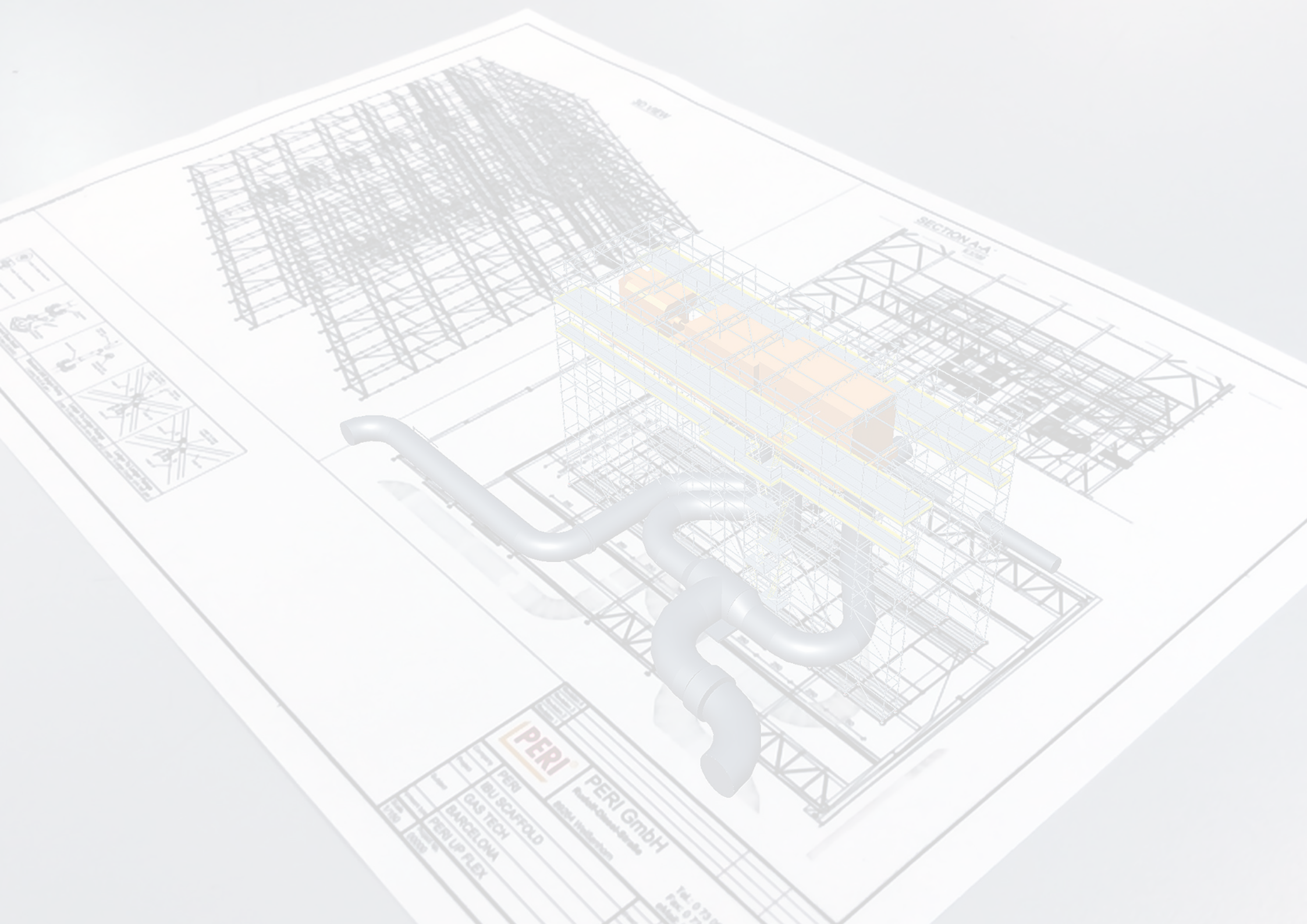
## CISRS Basic Access System Erector (BASE)



### Course Content

- Basic product information and manufacturer's instructions
- Legal overview (*health and safety*)
- British and European standards
- Overview of product accreditation and testing schemes
- Guidance and industry standards
- Component range
- Basic system(s) of work
- Bracing requirements
- Ties, stability and tie patterns
- Loading and duties
- Access towers
- Independent tied scaffolds including returns and hop-ups
- Birdcage access scaffold
- Loading towers
- Methods of access and egress including stairways





SECTION AA

SECTION AA  
1:50

**PERI**

**PERI GmbH**  
Rudolf-Diesel-Str. 1  
42699 Solingen

PERI  
IBU SCAFFOLD

GAS TECH  
BARCELONA

PERI UP FLEX

1:50

1:50

PERI  
IBU SCAFFOLD







# Course Details | Inspection

## CISRS Basic Scaffold Inspection (BSI)



### Course Duration

3 Days

### Purpose of Course

This CISRS-accredited course will develop your understanding of scaffolding components, forms of construction and the inspection procedures for basic access scaffolds and how to comply with current legislation and Codes of Practice.

### Entry Requirements

CISRS expect delegates to have awareness and experience of scaffolding structures, which would have come from time spent in their individual industry sector (construction, engineering, manufacturing, offshore etc.)

This experience would need to be confirmed by your CV or a similar document and should include contactable references and/or certificates. Examples of acceptable experience are:

- Delegate holds current CISRS Scaffolder/Advanced Card
- Delegate has previously attended a Scaffold Appreciation/Awareness course and Scaffold Inspection course
- A good understanding of spoken and written English is required. Please contact us if you have any concerns in this area.
- The CITB HS&E Test (or accepted exemption) needs to have been passed within the previous 23 months before the course start date.

# Course Details | Inspection

## CISRS Basic Scaffold Inspection (BSI)



### Course Content

- Introduction and welcome
- Course scope, aims and objectives
- Legal overview
- Inspections/hand-over procedures/ scaff tag system
- Reports
- European Standards (BS EN 12811:2003)
- NASC guidance document SG4
- Working at Height Regulations 2005
- Health & Safety at Work Act 1974
- Scaffold components/material
- Scaffold terminology
- Means of access and egress
- Gin wheels and ropes
- Scaffold foundation
- Scaffold tie
- Basic scaffold (*construction regulations and recommendations*)
- Working platforms
- Basic independent tied and putlog scaffold
- TG20 compliant scaffolds (e.g. bridging with beams, protection fans, freestanding towers, lift shaft towers, ladder access towers, birdcages, loading bays and chimney stack scaffolds).



# Course Details | Inspection

## CISRS PERI UP Scaffold Inspection



### Course Duration

1 Day

### Objectives & Scope

To give the attendees the knowledge required to enable them to understand how to inspect PERI UP scaffold structures in accordance with the Work at Height Regulations 2005 and the PERI UP instructions for assembly and use.

### Attendees

This course is intended for personnel responsible for inspecting PERI UP scaffolds as described in the PERI UP instructions for assembly and use and who are required to complete reports in accordance with the Work at Height Regulations 2005.

### Entry Requirements

Attendees will be required to hold:

- CISRS BSI (Basic Scaffold Inspection) or ASI (Advanced Scaffold Inspection) Card.
- CISRS Scaffolders & Advanced Scaffolders who have their CISRS cards endorsed with the inspection module of CPD.
- The CITB HS&E Test (or accepted exemption) needs to have been passed within the previous 23 months before the course start date.

### Note

Existing cards will be endorsed, BSI cardholder will only be able to inspect Basic Structures. If a BSI cardholder then progresses to ASI status, their new card will be endorsed with this training; they will not need to attend a further course.



# Course Details | Inspection

## CISRS PERI UP Scaffold Inspection



### Course Content

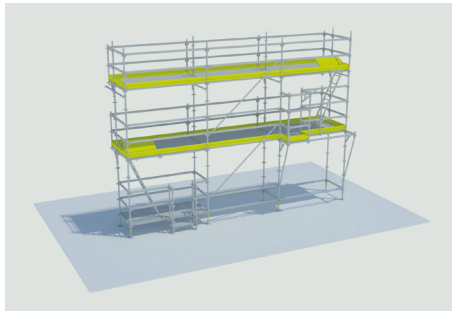
- Housekeeping
- Introduction & Welcome
- Legal Overview
- Industry Performance Standards
- General Principles
- PERI UP Components
- Structures
- Design Appreciation
- Damaged Stock
- Role of the Inspector
- Statutory Scaffold Inspection
- Practical Test

# Course Details | Bespoke Training

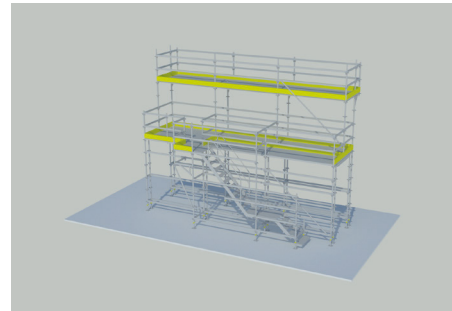
PERI UP Flex Modules

A - D

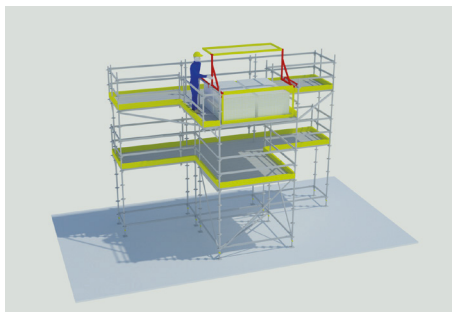
## Module A: Façade Scaffolding Application



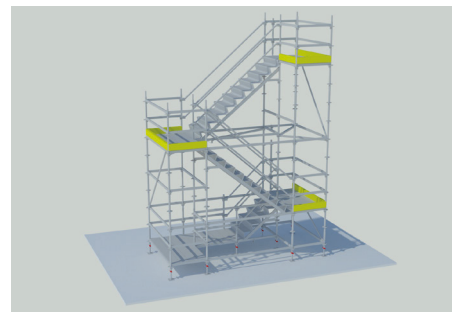
## Module B: Pedestrian access solution using standard components



## Module C: Façade Scaffold with Loading Bay



## Module D: Flex Stair Tower 100 Application with 1 m & 2 m flights

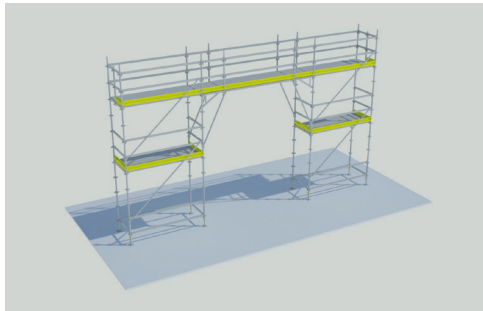


# Course Details | Bespoke Training

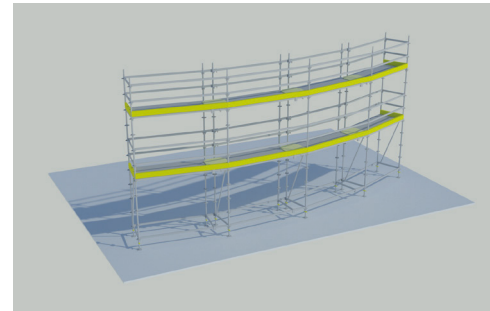
PERI UP Flex Modules

E - H

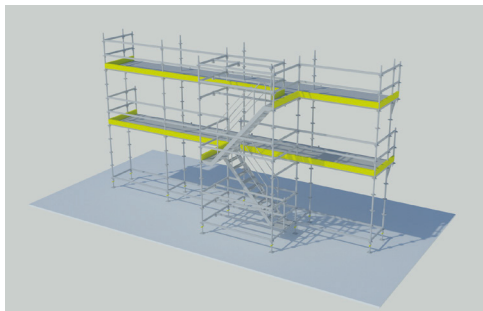
**Module E:** 4 m Bridge Span with Façade Scaffold



**Module F:** Radius Façade Scaffold Application



**Module G:** Flex Staircase 75 Application



**Module H:** Shaft Staircase in Hanging Application



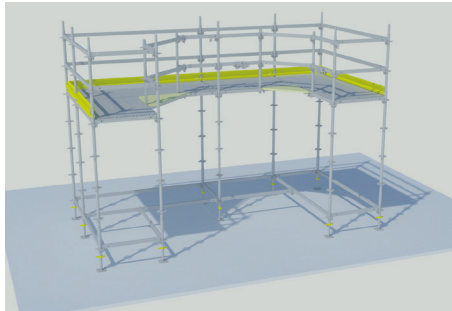


# Course Details | Bespoke Training

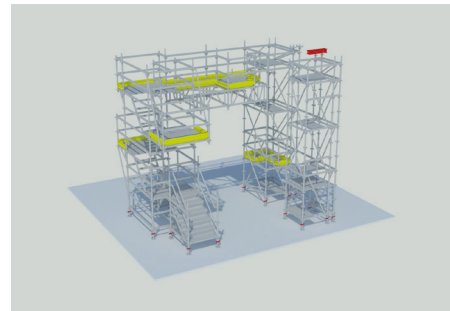
PERI UP Flex Modules

I - L

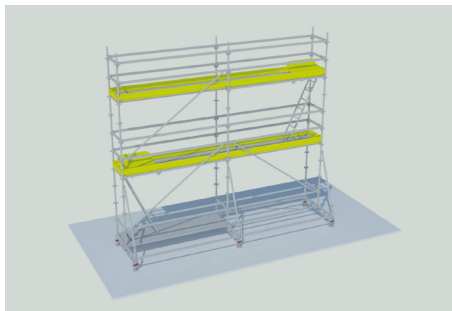
**Module I:** Flexible Scaffold to Small Radius Circular Structure



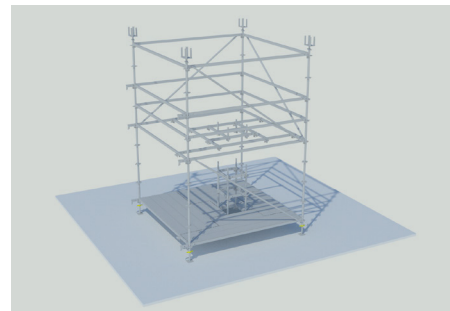
**Module J:** Exhibition Scaffold used for Off-Site Exhibitions



**Module K:** Reinforcement Scaffold Application



**Module L:** Tower Platform Application





# Course Details | Bespoke Training

## Other Modules

## Manual Handling Awareness

### Course Duration

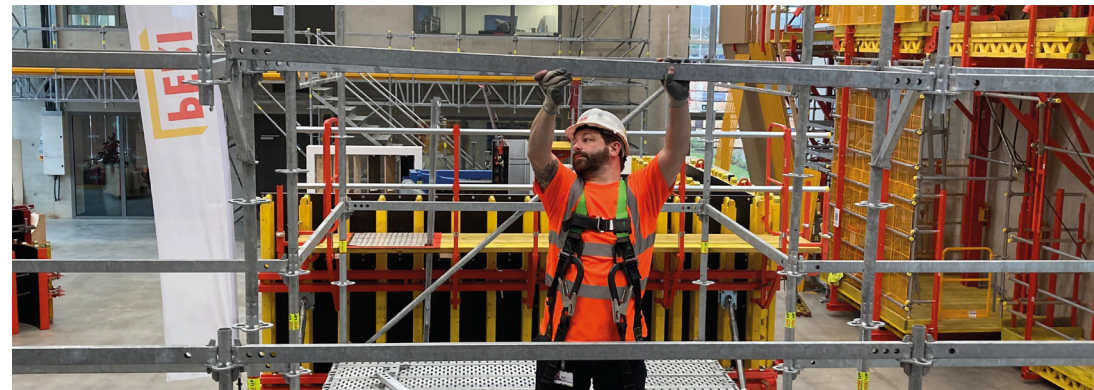
½ Day

### Purpose of Course

The aim of this course is to raise awareness about the risks of manual handling, so that you have a greater understanding of your responsibilities and how to carry out your job role safely.

### Course Content

- Aims and objectives
- Legislation
- Injuries common with manual handling
- Avoid or assess manual handling
- Handling techniques



# Course Details | Bespoke Training

## Other Modules

## Working at Height Awareness

### Course Duration

½ Day

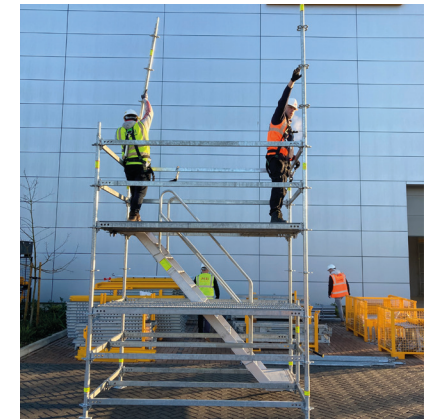
### Purpose of Course

The aim of this course is to:

- Give examples of common working at height tasks and understand the associated risks.
- Identify the factors that contribute to persons and objects falling from height.
- Describe the control measures that reduce the risk of falls from height.
- Understand the proper use of access equipment and safe methods of access to reduce or eliminate the risk of falls.

### Course Content

- Introduction and Legislation
- Risk Assessments
- Reducing and controlling the risks
- Working at Height Equipment
- Working at Height Assessment



# What you can expect from PERI services

Striking a balance between high levels of safety and on-site productivity is very important to us on all projects that we work on. Our scaffolding supervisors are experts with years of experience and knowledge of industry standards and best practice.

By providing the following services, we aim to enhance scaffolding activity and help you achieve desired results.

- We **advise** operatives on how to use the PERI UP Scaffolding system in the most efficient a effective way, at all stages of the design sequence.
- We **explain** plans and components in detail, and ensure office personnel are fully-trained and understand how to use the system.
- Through briefings and presentations, we **show** operatives how to assemble, operate and dismantle the PERI UP scaffolding system quickly and safely, in accordance with the latest Assembly Instructions and Safety Guidelines. We also provide troubleshooting steps for additional guidance.
- We **demonstrate** how to maintain, clean and store PERI UP scaffolding systems to ensure optimum performance when in use.
- We **offer** accredited classroom theory and practical training on how to use PERI UP scaffolding systems at our premises throughout the UK or at your jobsite.
- We can **provide** continuous on-site support by overseeing scaffolding activity and maintaining a close relationship with you throughout the duration of the project.



# What you can expect from PERI services

## Inspection

We provide tailored scaffolding inspection services to meet each client's specific requirements. All inspections are carried out in accordance with UK legislations, which states that all scaffolding should be inspected:

- During installation and before first use
- At intervals of no more than seven days
- In the event of adverse weather conditions

All of our inspectors are highly experienced and qualified CISRS Advanced Scaffolding Inspectors.

---

## Site Supervision

Our one-off or regular scaffolding audits scaffolding structures, temporary works and on-site safety can be used as a tool to measure compliance with SG4 and Work at Height Regulations 2005.

## Monitoring

We can provide regular and one-off scaffolding inspections to monitor compliance of statutory inspections carried out by or on behalf of the client.

As part of this service, we can provide a full written report including supportive photographic evidence if required.

---

## Project Management

We can supervise and plan scaffolding-related activities, as well as communicate with all trades on your behalf.

This involves communicating with scaffolding contractors to ensure that the design of the scaffold is correct and erected as planned. We also ensure that operatives are fully trained prior to carrying out any work.



# Contact Us

If you are interested in our courses, or if you have any questions about our services, please feel free to contact us.

## General Enquiries

### Email

training.services@peri.ltd.uk

### Phone

01788 861600

Get a quote for the training services you require now:

[www.peri.ltd.uk/training-services-quote](http://www.peri.ltd.uk/training-services-quote)



Attendees may also be eligible for **CITB Training Grant Aid**. Contact us for details.

More information can be found on our website:

[www.peri.ltd.uk](http://www.peri.ltd.uk)

